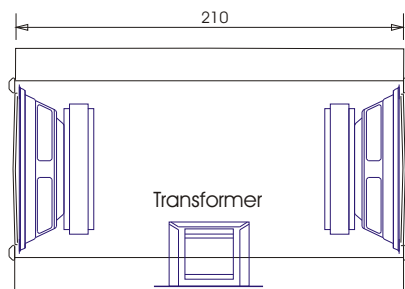




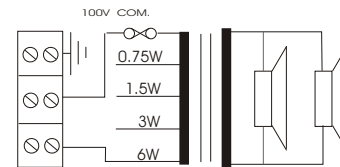
VANDALPROOF BI-DIRECTIONAL METAL CABINET LOUDSPEAKER

SENTRY6/BDTC

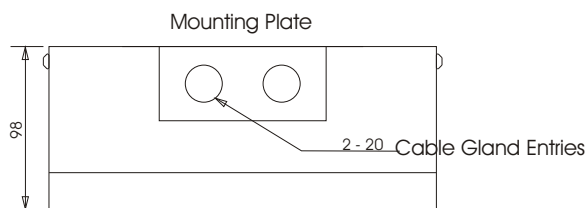
Installation instructions



Front View

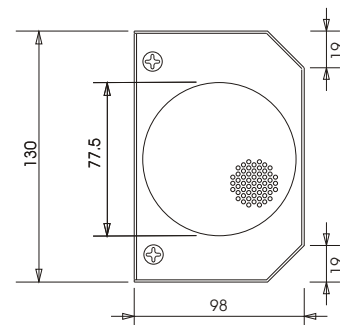


Circuit Diagram



Top View

unit: mm



Side View

1. You can cable this unit via the cable entry in the centre of the mounting plate or by the 2 x 20mm cable entries to be found at the top of the same plate. See above drawing.
2. Take the mounting plate from the loudspeaker by removing the 4 x M4 x 12mm cross head screws.
3. Secure the back plate to a flat surface using the fixing holes provided.
4. Once the cable has entered the unit terminate the 100 volt line supply via the ceramic terminal block provided to your required volume as shown on the circuit diagram.
5. Reverse the process requested in item 2 and slide the loudspeaker cabinet onto the mounting plate and replace the 4 screws previously removed.